

Injury attendances to Tameside Accident and Emergency Department

April 2008 to March 2009

This report summarises recorded injury attendances to Tameside Accident and Emergency Department (AED) between April 2008 and March 2009.

Between April 2008 and March 2009 there were 76,265 injury attendances to Tameside AED. Males accounted for just over half of all attendances (n=38,698; 51%). The month with the highest attendances was March (n=6,848) with February having the lowest attendances for injury (n=5,814) (**Figure 1**). The majority of attendances were recorded as other injury (85%). Of the specified injury groups falls accounted for the highest proportion (7%) followed by road traffic collisions (RTCs) (3%), assaults (2%) and sports injury (2%) (**Table 1**).

For all injuries the highest proportion of attendances were for persons aged 20-34 (22%) and 5-19 (19%) (**Figure 2**). Nearly a third of fall injury attendances (30%) were by persons aged 65 or over with nearly a fifth (19%) aged 5 to 19. Over two-fifths (41%) of RTC attendances were for persons aged 20-34. Nearly half (45%) of assault attendances were for persons aged 20-34. Over a half (54%) of all sports injury attendances were for persons aged 5-19 with a further third (36%) aged between 20 and 34 (**Figure 3**).

Table 2 shows the ethnicity of injury attendees to Tameside AED. Over three-quarters (n=62,295; 82%)

were white, 12% were recorded as unknown, 2% were Pakistani.

The disposal of a patient can give an indication of the severity of the injuries sustained. Most attendees were referred for further treatment (55%), nearly a quarter (22%) were admitted and 15% were discharged from hospital. (**Table 3**). A third (36%) of deliberate self harm (DSH) attendances were referred whilst a third were admitted (35%). Two thirds of sports attendances (66%) were discharged with only 2% being admitted. A third (36%) of RTC attendances were discharged (**Table 4**).

Table 5 shows the arrival method of injury attendances at Tameside AED. For nearly three quarters (70%) of attendees the method of arrival was recorded as other.

Figure 4 (a-d) shows crude rates of injury attendance at Tameside AED by attendees area of residence, in this case Middle Super Output Area (MSOA). The MSOA with the highest crude rates are indicated beneath each figure.¹

¹ Population figures are drawn from mid-2008 population estimates from the Office for National Statistics.

Figure 1: Tameside AED: Total injury attendances by gender and month, April 2008 to March 2009

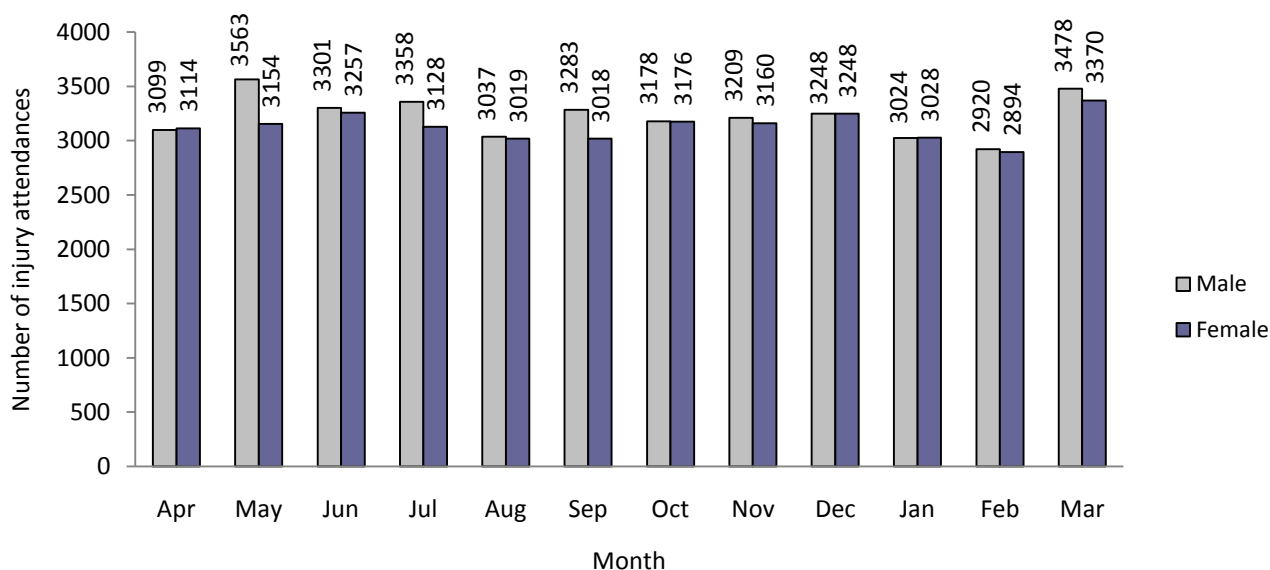


Table 1: Tameside AED: Total injury attendances by injury group and month, April 2008 to March 2009

Injury	Apr	May	Jun	Jul	Aug	Sep	Oct	Nov	Dec	Jan	Feb	Mar	Total	%
Other	5291	5639	5687	5678	5096	5320	5418	5406	5548	5196	5001	5844	65124	85
Fall	420	529	404	398	446	455	421	437	487	423	422	457	5299	7
RTC	189	213	188	162	184	213	223	175	194	134	133	175	2183	3
Assault	128	154	116	118	149	135	121	156	122	139	117	148	1603	2
Sports	129	113	96	70	101	129	118	133	71	91	86	158	1295	2
DSH	56	69	67	60	80	49	53	62	74	70	55	66	761	1
Total	6213	6717	6558	6486	6056	6301	6354	6369	6496	6053	5814	6848	76265	100

Figure 2: Tameside AED: Total injury attendances by age group, April 2008 to March 2009

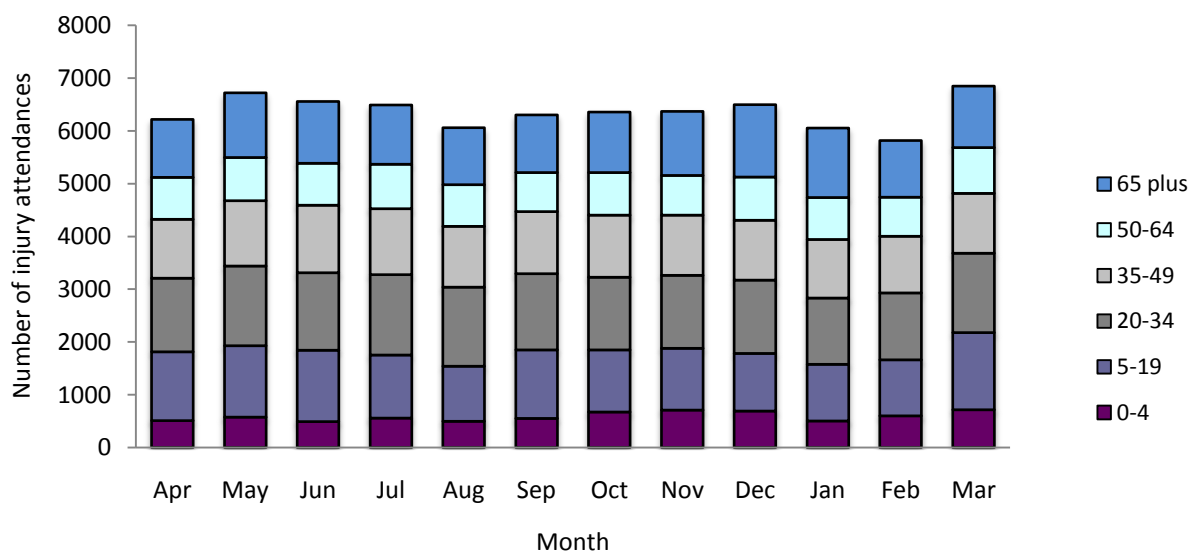


Figure 3: Tameside AED: Total injury attendances by age group and injury group, April 2008 to March 2009

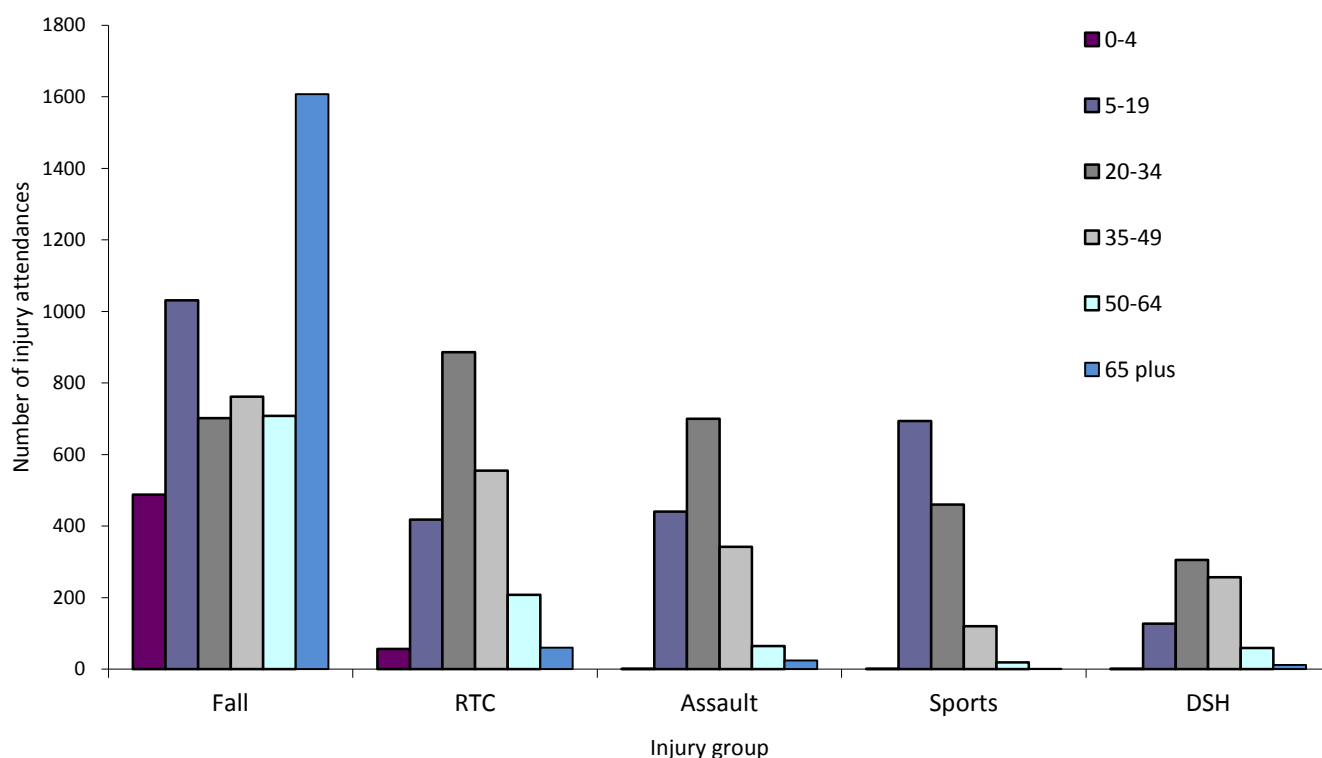


Table 2: Tameside AED: Total injury attendances by ethnicity and month, April 2008 to March 2009²

Ethnicity	Apr	May	Jun	Jul	Aug	Sep	Oct	Nov	Dec	Jan	Feb	Mar	Total	%
White	5121	5553	5382	5310	4952	5148	5192	5145	5202	4936	4727	5627	62295	82
Unknown	753	778	760	782	748	760	739	837	875	764	723	809	9328	12
Pakistani	82	100	120	118	107	117	113	92	112	102	97	95	1255	2
Other	88	86	83	105	93	90	78	91	96	66	83	100	1059	1
Bangladesh	68	72	79	56	70	67	79	76	69	68	68	97	869	1
Indian	54	69	62	58	40	57	81	58	64	58	49	51	701	1
Mixed	22	32	39	25	19	34	37	41	42	30	35	33	389	1
Black	17	18	25	23	21	18	30	14	23	22	22	23	256	0
Chinese	8	9	8	9	6	10	5	15	13	7	10	13	113	0
Total	6213	6717	6558	6486	6056	6301	6354	6369	6496	6053	5814	6848	76265	100

² White = White Irish, White British, White; Unknown = Not Given, Not stated, Not collected; Mixed = Mixed White and Black, Mixed White and Black African, Mixed White and Asian, Mixed any other; Other = Any other ethnic group, Any other Asian background; Black = African, Caribbean, Other black

Table 3: Tameside AED: Total injury attendances by method of disposal and month, April 2008 to March 2009³

Disposal	Apr	May	Jun	Jul	Aug	Sep	Oct	Nov	Dec	Jan	Feb	Mar	Total	%
Referred	3606	3511	3621	3686	3484	3666	3528	3439	3443	3183	3282	3810	42259	55
Admitted	1209	1377	1342	1287	1177	1239	1433	1443	1490	1522	1368	1524	16411	22
Discharged	958	1245	1059	955	918	907	927	1007	964	973	757	945	11615	15
Other	440	584	536	558	477	489	466	480	599	375	407	569	5980	8
Total	6213	6717	6558	6486	6056	6301	6354	6369	6496	6053	5814	6848	76265	100

Table 4: Tameside AED: Total injury attendances by method of disposal and injury group, April 2008 to March 2009

Disposal	Other	%	Fall	%	RTC	%	Assault	%	Sports	%	DSH	%	Total	%
Referred	35994	55	3106	59	1143	52	885	55	858	66	273	36	42259	55
Admitted	15189	23	715	13	84	4	133	8	26	2	264	35	16411	22
Discharged	8974	14	1174	22	796	36	274	17	359	28	38	5	11615	15
Other	4967	8	304	6	160	7	311	19	52	4	186	24	5980	8
Total	65124	100	5299	100	2183	100	1603	100	1295	100	761	100	76265	100

Table 5: Tameside AED: Total injury attendances by mode of arrival and month, April 2008 to March 2009

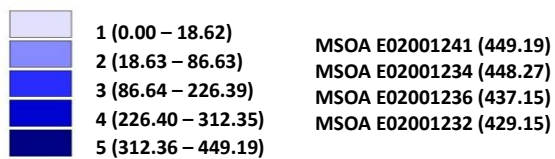
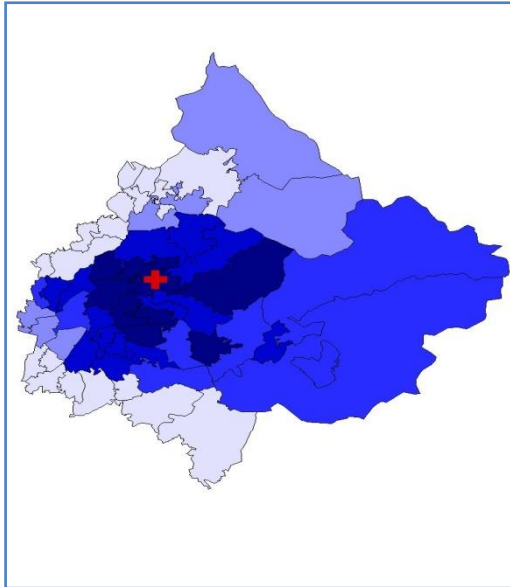
Mode	Apr	May	Jun	Jul	Aug	Sep	Oct	Nov	Dec	Jan	Feb	Mar	Total	%
Other	4507	4811	4731	4536	4240	4484	4356	4369	4401	4037	4103	4888	53463	70
Ambulance	1706	1906	1827	1950	1816	1817	1998	2000	2095	2016	1711	1960	22802	30
Total	6213	6717	6558	6486	6056	6301	6354	6369	6496	6053	5814	6848	76265	100

³ Admitted=admitted to AED bed/became a lodged patient of the same health care provider; Discharged=discharged - did not require any follow up treatment; Referred =discharged - follow up treatment to be provided by GP, referred to AED clinic, referred to fracture clinic, referred to other out-patient clinic, transferred to other health care provider, referred to other health care professional; Other=died in department, left department before being treated, left department having refused treatment, other.

Figure 4a,b,c,d: Middle Super Output Area of residence for injury attendances to Tameside AED. Quintiles of crude rates per 1,000 population, April 2008 to March 2009

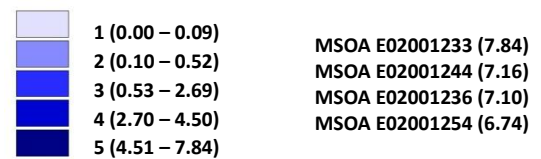
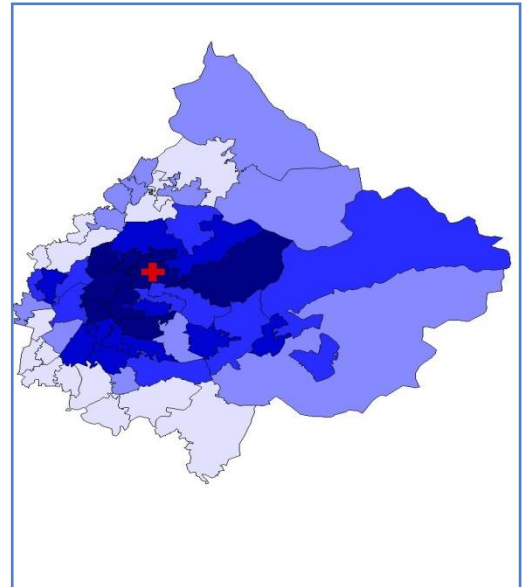
a) All injuries: quintiles of crude rates per 1,000 population

 Tameside AED



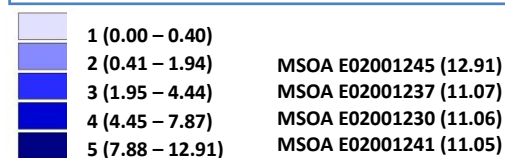
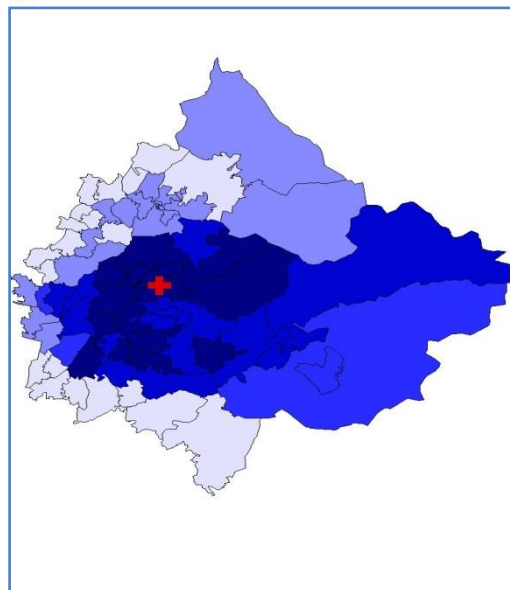
b) Assault injuries: quintiles of crude rates per 1,000 population

 Tameside AED



c) RTCs: quintiles of crude rates per 1,000 population

 Tameside AED



d) Falls: quintiles of crude rates per 1,000 population

 Tameside AED

